

# INSTRUCTION MANUAL

## ASPIRE ELITE TC909 AIRBRUSH COMPRESSOR



**BADGER** / **Thayer & Chandler**  
PROFESSIONAL AIRBRUSHES SINCE 1891



9128 W. Belmont Ave.  
Franklin Park, IL 60131  
Phone: 800-Air-Brush Fax: 847-671-4352  
[www.badgerairbrush.com](http://www.badgerairbrush.com)



CE ROHS

## 1. Features & Functions:

- Compressor cover with attached airbrush holder.
- Adjustable Air Regulator, Filter and Gauge.
- Piston type, oil-less.
- Can start with pressure, continuous working, powerful.
- Thermal overload Protection.
- Low noise; 47db.
- Automatic Shut-Off Function.

## 2. Compressor Specifications:

Type: Single Cylinder Piston Compressor

Power: 1/6 HP

Speed: 1450/1700 r.p.m.

Air output per min./litres: 20-23L/min

Auto stop, start at 3bar (43psi), stop at 4bar (57 psi)

Pressure adjustable range: 0-4bar.

Suitable for airbrush tip sizes 0.2mm to 1.0mm.

Connections: with connection 1/4" NPSM

Net Weight: 8.75lbs. (3.9kgs)

Dimension: 255X135X220mm

## 7. Air Compressor Warranty:



a. Handle

b. Airbrush holder

c. Pressure Regulator

d. Gauge

e. Connection

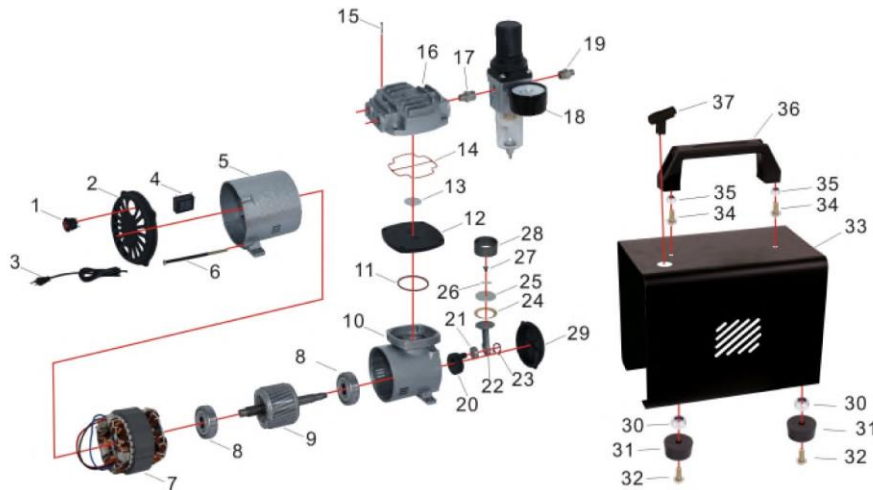
f. Air filter

### WARRANTY FOR BADGER AIRBRUSH COMPRESSOR

BADGER AIR-BRUSH COMPANY warrants to the purchaser that its compressor will be free from defects in material and workmanship for a period of one (1) year.

A compressor failing within the warranty period due to defects in material and workmanship will be repaired or replaced, at Badger's option, without charge to the purchaser when returned with proof of purchase to the BADGER AIR-BRUSH CO., transportation prepaid by purchaser. This warranty excludes equipment which has been subjected to corrosion, negligence, accident or units which have been altered or abused in any way.

## 6. Spare Parts List:



PART #	DESCRIPTION	QTY.	PART #	DESCRIPTION	QTY.
TC909N #01	POWER SWTCH	1	TC909N #20	COUNTERWEIGHT	1
TC909N #02	FRONT COVER	1	TC909N #21	BEARING	1
TC909N #03	WIRE	1	TC909N #22	LINK	1
TC909N #04	CONDENSER	1	TC909N #23	SNAP RING	1
TC909N #05	REAR BODY	1	TC909N #24	COMPRESSION RING	1
TC909N #06	SCREW	4	TC909N #25	BLOCK	1
TC909N #07	STATIONARY MOTOR	1	TC909N #26	VALVE PLATE	1
TC909N #08	BEARING	1	TC909N #27	SCREW	1
TC909N #09	ROTARY MOTOR	1	TC909N #28	CYLINDER	1
TC909N #10	FRONT COVER	1	TC909N #29	FRONT COVER	1
TC909N #11	O-RING	1	TC909N #30	NUT	4
TC909N #12	CYLINDER BLOCK	1	TC909N #31	RUBBER PAD	4
TC909N #13	O-RING	1	TC909N #32	SCREW	4
TC909N #14	O-RING	1	TC909N #33	COAT	1
TC909N #15	SCREW	4	TC909N #34	SCREW	2
TC909N #16	CYLINDER HEAD	1	TC909N #35	NUT	2
TC909N #17	CONNECTOR	1	TC909N #36	HANDGRIP	1
TC909N #18	FILTER VALVE	1	TC909N #37	HOLDER	1
TC909N #19	CONNECTOR	1			

## 3. Operating Instructions:

1. Connect the air compressor, air hose and airbrush (or other air tools), plug into the mains supply, turn on the switch, and then the air compressor will start working. The gauge will show the max pressure, and you can adjust the working pressure by adjusting the pressure adjustor.
2. Checking the air leakage. Please do not use the air tools first, when the pressure reach the max pressure (auto stop function), for the compressor do not have auto stop function, please turn off the switch. Then check the needle of pressure gauge, if the needle on gauge is very steady, it means the airtight is very good. If the needle decline down quickly, it means there is air leakage in some place of connection. Please check and make it airtight. Any small leak will affect the performance of the compressor. (It may lead to frequently auto stop and auto start). The use of Teflon tape on thread connection might be necessary to prevent leakage.
3. The difference between max pressure and working pressure. A compressor's maximum pressure is the highest pressure it can build up. When a connected airbrush is opened, it is precisely with this pressure that compressed air initially shoots out through the airbrush nozzle. In contrast, the working pressure is the constant pressure the compressor can maintain during airbrushing. The level of this working pressure depends, on the other hand, the nozzle diameter of the airbrush to which it is connected; the larger the nozzle diameter, the greater the amount of air which can escape and the lower the compressor's working pressure.
4. At the bottom of the regulator & filter is the water release valve; you can open the valve to release the water or moisture at any time.

#### 4. Notice:

1. The users should choose the right air compressor with suitable air flow and pressure according to the actual work requirement.
2. Before connecting the compressor, check that the mains voltage complies with the electrical characteristics of the motor.
3. Please follow local electrical rules, and safety rules. And the use of a socket which must be grounded.
4. Never leave the appliance exposed to dust, acids, vapors, explosive or flammable gasses or atmospheric agents (rain, sun, fog, snow).
5. The compressor must be used in suitable environments (well-ventilated, with an ambient temperature between +5°C and +40°C)
6. Never use the appliance in your bare feet or with wet hands or feet.
7. Never allow children to touch the compressor while it's operating or place any foreign objects in the compressor this may cause burns or electric shock.
8. Do not open or tamper with any part of the compressor. Contact

Badger Air-Brush Co.

9128 West Belmont Ave. Franklin Park, IL 60131

[www.badgerairbrush.com](http://www.badgerairbrush.com)

Ph. 800-AIRBRUSH

#### 5. Operation of Regulator & Filter:



**Product name:** Regulator & Filter with Gauge

#### **Characteristic:**

This is an in-line low pressure regulator with a 100 p.s.i. gauge and moisture drain. This regulator gives user control of operating pressure as well as assisting in furnishing clean, dry and regulated air. Regulators must only be used as instructions and warnings specify.

#### **Operation:**

1. The gauge reflect the working pressure of the air tools.
2. Pull the pressure regulator up; turn clockwise to increase the pressure; turn counter-clockwise to release the pressure.
3. Turn the pressure regulator to get the right working pressure needed,  
Do not turn the button when it cannot be adjusted.
4. Push the bottom water release needle to release the water.